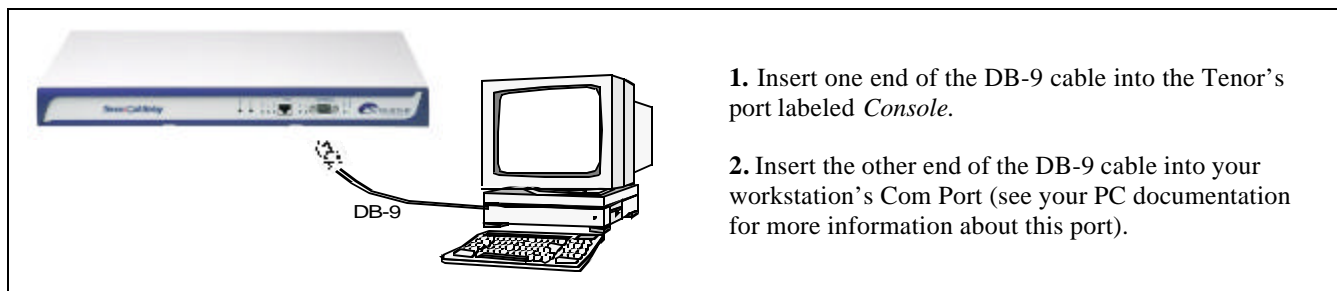


Tenor™ Call Relay Quick Start

STEP 1: Connect to Console Port

Connect to PC Console. You will need to connect the Tenor unit to your workstation's serial port via RS-232 connection. (This connection will be used when you assign an IP address to the unit. For the instructions below, it is assumed you are connecting to a PC.)

Figure 1: Connect to PC Com Port



STEP 2: Configure Terminal Software to Communicate with Tenor

Communication between the Tenor and the PC is enabled via RS-232 connection and terminal emulation software. The instructions below assume you are running HyperTerminal (running on Windows 95 or later) on your PC. For all other terminal emulation packages, the specific Tenor commands used to assign the IP address will be the same, but the software specific instructions will be different.

1. Click on *Start > Programs > Accessories > Communications > HyperTerminal > Run*. The *HyperTerminal* window will be displayed. Click on **Hypertrm**.
2. Enter a *Connection Description* (i.e., name for each unit such as Tenor Call Relay 1 and click **Ok**.
3. Choose the connection port on your PC from the *Connect Using* drop down list box (i.e., Direct to Com1). Click **Ok**. The *Com1 Properties* window will be displayed. See Figure 2.

Figure 2: COM1 Properties screen



4. From the *Bits Per Second* drop down list box, choose 38400.
5. From the *Data Bits* drop down list box, choose 8.
6. From the *Parity* drop down list box, choose *None*.
7. From the *Stop bits* drop down list box, choose 1.
8. From the *Flow control* drop down list box, choose *None*. Click **Ok**.

A connection to the Tenor unit will be established.

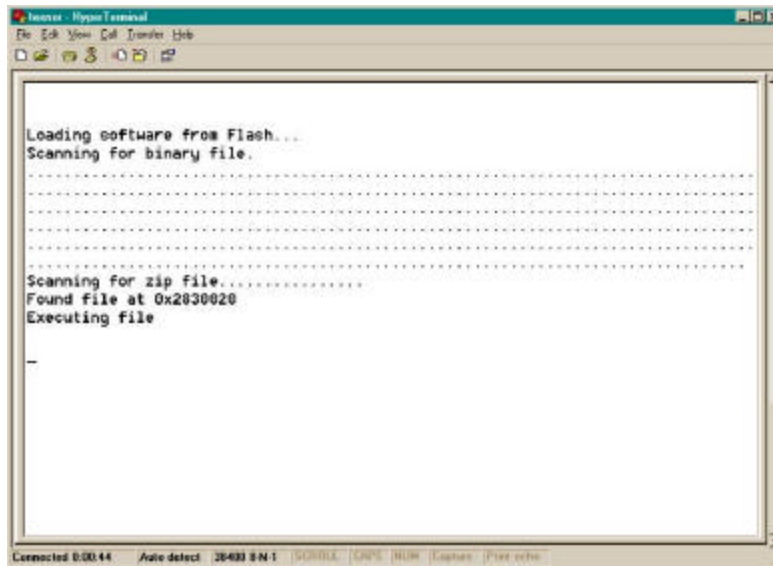
Step 3: Assign IP Address

When a Tenor is shipped to a customer, it has a private IP address assigned to it which is utilized by Quintum Manufacturing for final testing, prior to shipment. An IP address is a 32 bit (up to 12 numeric characters) address used to identify each network device in the TCP/IP network. If the unit does not have an IP address, data will not be able to be sent to or from the unit. You can re-configure the IP address using the following procedure.

Note: Ensure your PC is connected via serial cable to the Tenor, and HyperTerminal is configured and running.

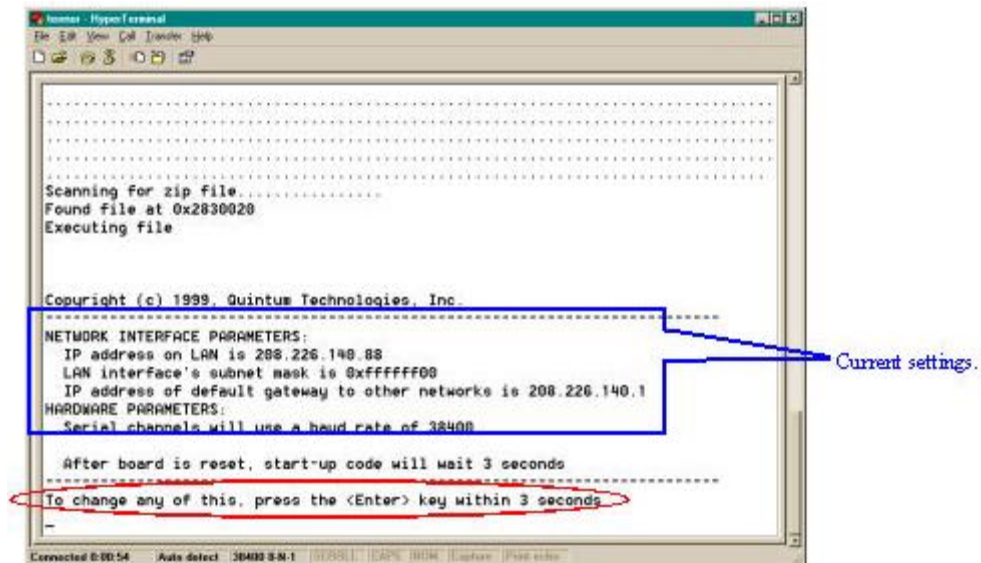
1. Press the Tenor unit's power switch to **On**. Information about the unit will scroll on the screen. See Figure 3.

Figure 3: Initial Screen



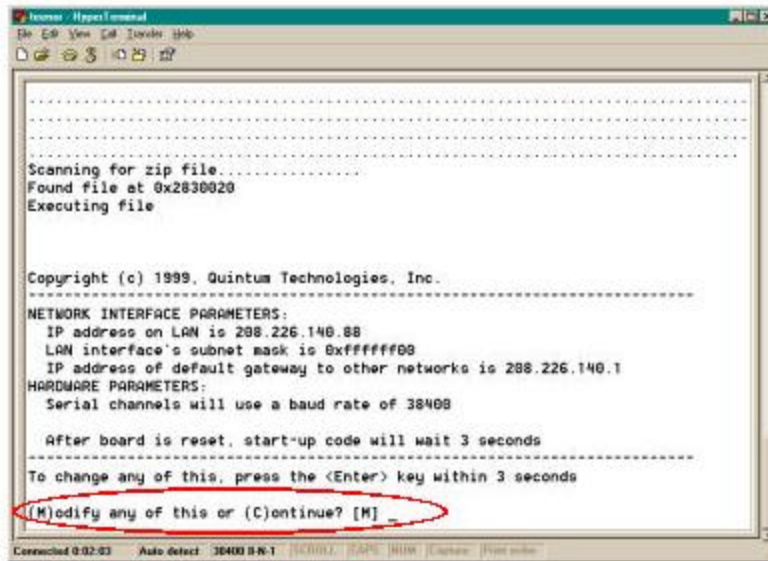
2. To change any of this information, including setting the IP address, press the **Enter** key when you see the following message appear "To change any of this, press <Enter> key within 3 seconds". See Figure 4.

Figure 4: Current Settings Screen



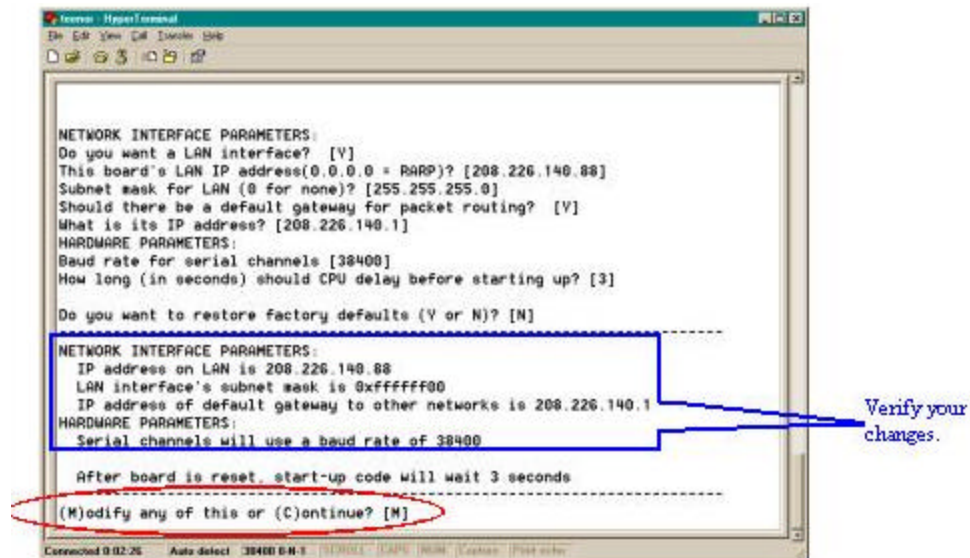
3. At the prompt "(M)odify any of this or (C)ontinue?" [M], press the **Enter** key. See Figure 5.

Figure 5: Modify Screen



4. Step through each of the parameters and enter the correct values for your installation.
 - Any information that is enclosed in brackets, [], is the default setting. Pressing **Enter** will select the default setting.
 - Do not change the “Baud Rate for serial channels [38400]”; this will affect the rate for accessing the Tenor via the serial interface.
 - The values for Ethernet mode are: 0 (Auto-negotiation between 10 and 100Mbps, DEFAULT) and 10 (10 Mbps).
5. At the ‘Do you want to restore factory defaults (Y or N)? [N]’ hit **y** and enter.
 - This will wipe out any previous configuration including any previously entered password. This will not erase any IP information such as the IP address, Subnet Mask or Default Gateway.
 - *If during normal operation, the password is forgotten, there is no way to retrieve it. There is no master password or “back-door” password. The password is stored with the configuration, so if you had previously archived the configuration to disk and now have forgotten the password, restoring the configuration from disk will also restore the same password. The only way around this is to go through the serial interface following the procedures above and restore to factory default. You will then need to re-configure your Tenor from scratch.*
6. The values you have set will be displayed. See Figure 6.

Figure 6: New Values Displayed



7. If the values are correct, type **C** and press the **Enter** key to continue with the boot-up process.
8. Once the IP information is set, you are ready to configure the unit. See the *Tenor Call Relay Product Manual* (included on your CD ROM) for details.

Step 4: Connect the Unit

The following section describes how to connect the Tenor Call Relay to an Ethernet Hub/Switch.

Connect to Ethernet Hub/Switch

You can use these instructions for general connection only. The Ethernet hub/switch documentation should provide specific instructions for connection to another device, such as the Tenor.

Figure 7: Connect to Ethernet Hub/Switch

