

Configuration Manager Wizard

Quick Start

The *Configuration Manager Wizard* enables you to configure Tenor® products in a simple, easy-to-use GUI, which is part of the *Tenor Configuration Manager*. The *Configuration Manager Wizard* discovers local Tenors. Once the Wizard displays the list of Tenors, you select the desired Tenor which needs configuration, and the wizard will walk you through the configuration process. Through the Wizard, you can set the Tenor's configuration, including IP address, dial plan, routing, and protocol data.

The following Tenor products can be configured using the *Configuration Manager Wizard*.

- *Tenor AS/AX/AF*
- *Tenor DX*
- *Tenor BX*

Step 1: Download the Configuration Manager (including the Wizard)

Ensure you have downloaded the latest version of the *Configuration Manager* from www.quintum.com or from the documentation CD you received with the unit. The Wizard is part of the *Tenor Configuration Manager* release **v104-12-00** and later.

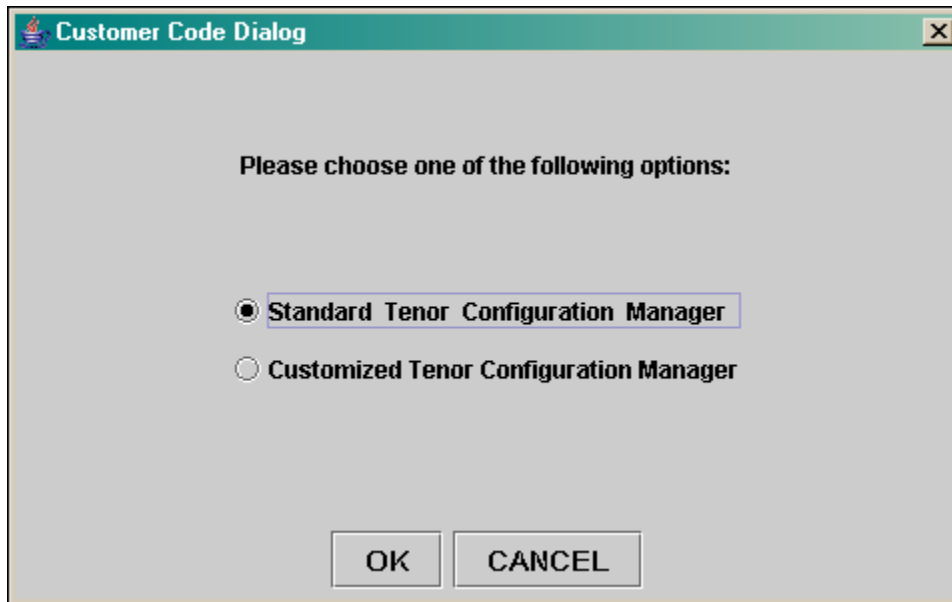
For specific download instructions, see the *Tenor Configuration Manager/Monitor User's Guide*.

WARNING: Before downloading the Configuration Manager from the Quintum web site, we recommend you temporarily disable your firewall (including the Virus Detection software) in your PC. Otherwise, the Configuration Manager may be intercepted and problems may occur.

Step 2: Connect to Wizard/Discover Local Tenors

1. Once the *Tenor Configuration Manager* is downloaded, unzip and extract the zipped files into a local directory of your choice on your PC.
2. From the location on your PC in which you installed the *Configuration Manager* files, click on **setup.exe**. The installation process begins and the *Quintum Tenor Configuration Manager* screen is displayed.
3. Click on **Next**. Choose a directory in which to install the software (the default is *C:\Program Files\Quintum\Tenor Configuration Manager*). You are prompted through the rest of the installation process. Once installation is complete, the *Customer Code Dialog* screen is displayed. See [Figure 1-1](#).

Figure 1-1 Customer Code Dialog



4. Select an option and click **OK**.

- **Standard Tenor Configuration Manager.** Selects the generic *Configuration Manager* for configuration.
- **Customized Tenor Configuration Manager.** Enables you to configure a company-specific code, if available. See the system administrator for more information. The generic, default customer code is **0000**.

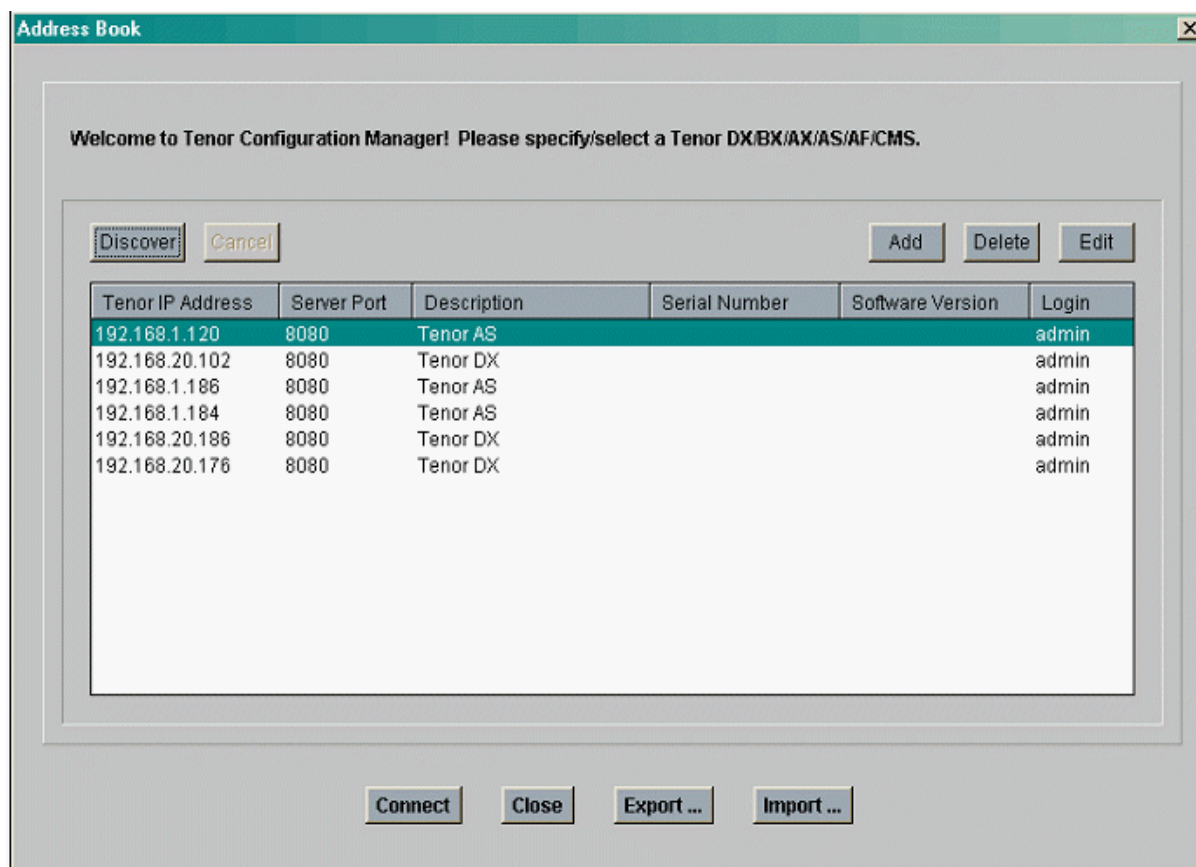
If you select *Standard Tenor Configuration Manager*, a dialog box is displayed, “You are about to install Standard Tenor Configuration Manager. Do you want to continue?” Click **Yes**.

If you select *Customized Tenor Configuration Manager*, a box is displayed for the appropriate customer code. Enter the customer code and click **OK**. You are about to install Standard Tenor Configuration Manager. Do you want to continue?” Click **Yes**.

The installation process will complete.

5. Launch the Configuration Manager from the location in which it is installed (default: *Start > Programs > Quintum > Configuration Manager > Tenor Config Manager*). Once launched, the *Address Book* screen is displayed. See [Figure 1-2](#).

Figure 1-2 Address Book



NOTE: Before the Tenor executes an auto-discovery session, we recommend you check your local firewall settings. The discovery process can only occur on ethernet ports on the PC which are directly connected to their respective subnets (i.e., your local subnet). We recommend setting the firewall to accept local traffic (by making local subnet a trusted zone).

NOTE: If you need to edit the configuration for an already established Tenor listed in the *Address Book* screen, you can simply select the desired Tenor from the *Address Book* screen and click on **Connect** to proceed with a normal *Configuration Manager* session.

6. Click on the **Discover** Button. The *Local Tenor Discovery* screen is displayed, listing all local Tenors which are “discovered”. See [Figure 1-3](#).


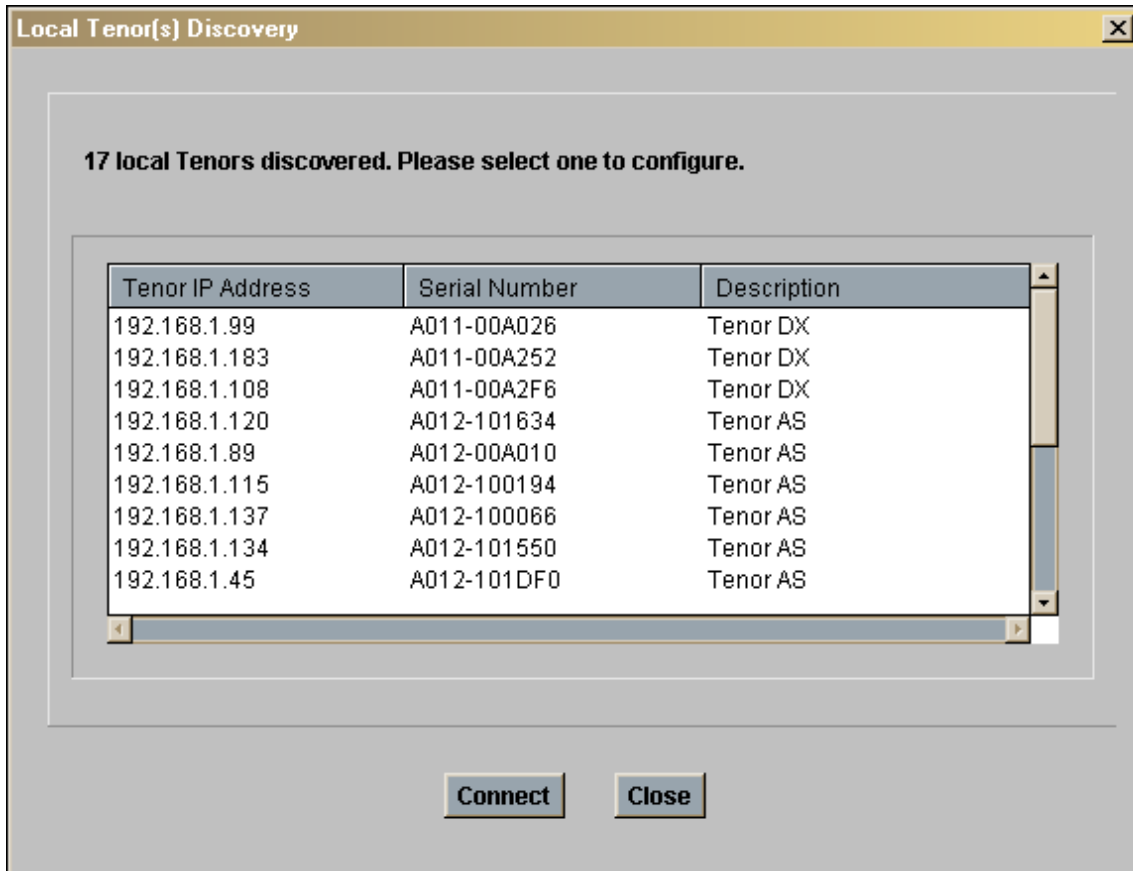
NOTE: You can also reach the Tenors Discovered screen option from the *Configuration Manager*’s main menu by clicking on the  **Discover** icon.

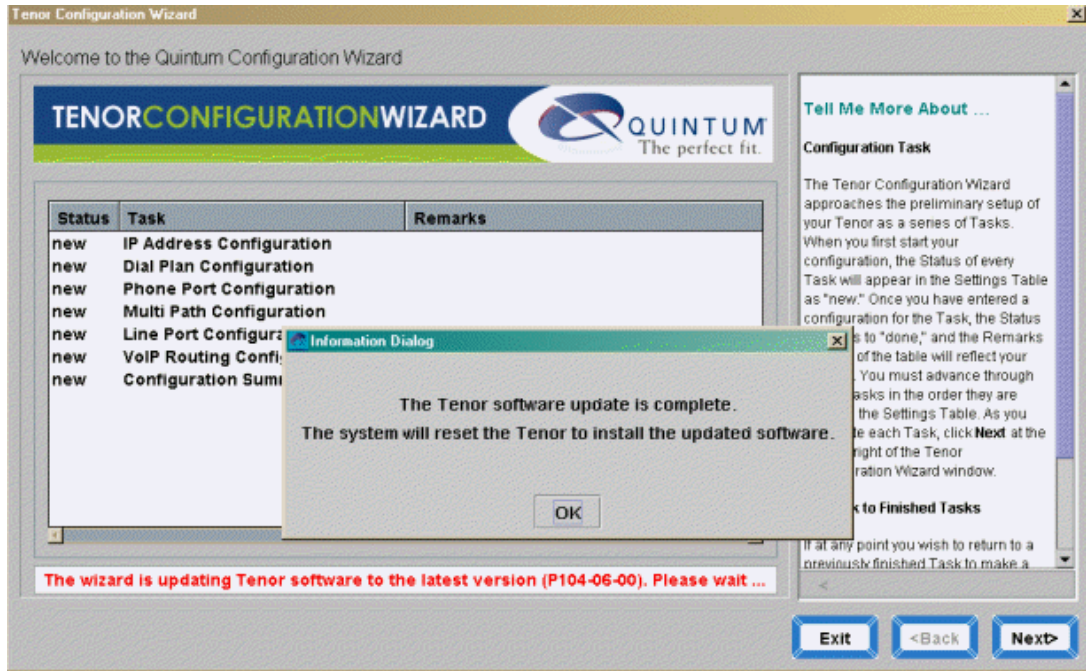
Figure 1-3 Local Tenor Discovery screen



7. Select the desired Tenor and click on **Connect**. (To confirm you are selecting the correct Tenor, you can compare the Serial Number listed on the *Tenor Discovered* window for that particular unit, against the serial number listed on the actual unit's bottom). The *Specify Login and Password* screen is displayed.
8. Enter a login and password (default values are **admin** for both) and click **OK**.
9. **For initial install:** If this is an initial install, it is likely that you already have the latest software. The software update process will not run and the *Configuration Wizard* splash screen is displayed. Go to step 11.
10. **For subsequent installs:** If the latest software installed on your unit is an earlier version than the latest software available on the Quintum web site, the *Configuration Manager* will automatically update your software. The *Software Loader Dialog* window appears.

When completed, a dialog box displays asking you "The Tenor Software update is complete. The System will reset the Tenor to install the updated software." See [Figure 1-4](#).

Figure 1-4 Wizard Software Loader screen



Click **OK**. Once completed, the system resets and a message asks you to re-connect to the Tenor. Click **OK**. When re-connected, the *Configuration Wizard* main screen is displayed. See [Figure 1-5](#). go to step 11.

Figure 1-5 Configuration Wizard main screen



11. To begin configuration, click on **Next** to move to the next screen. A series of configuration screens are displayed to configure your Tenor (status of each task is displayed on the main menu; see [Figure 1-5](#)). The right panel on the screen displays full help for the current screen you are configuring.

The following buttons are displayed through the wizard process (not every button will appear on every screen). Definitions are as follows:

- **Next:** Moves to next screen.
- **Back:** Moves to previous screen.
- **Exit.** Exits the Wizard.
- **Cancel:** Cancels any changes you made to the screen.
- **Done.** Confirms you are done working with the current screen.
- **Accept:** Accepts configuration options and submits the changes to the Tenor.

- **Close:** Closes the current screen.
- **Save/OK.** Saves changes to the current screen.

The general configuration tasks are listed below; each task has one or more configuration screens. Some configuration items are product-specific; these are noted where applicable.

Table 1-1 Wizard Configuration Tasks

Configuration Task	Products which Apply	Definition
IP Address Configuration.	All	Sets IP address information along with DNS Server information.
Dial Plan Configuration.	All	Sets Dial plan information.
Application Configuration	Tenor DX/BX	Sets application type.
Line Configuration	Tenor DX	Sets line and signaling type information.
Line Configuration	Tenor BX	Sets line and protocol information.
Phone Number Configuration	Tenor DX/BX	Adds phone number/extensions.
Phone Port Configuration	Tenor AS/AX/AF	Sets disconnect generation, caller ID generation, as well as phone number/extensions.
MultiPath Configuration	Tenor AS/AX/AF	Enables pass through calls and number pattern.
Line Port Configuration	Tenor AS/AX	Sets disconnect detection, caller ID detection, and tone based answer detection.
VoIP Routing Configuration.	All	Sets SIP or H.323 and all related information.

12. After configuring all screens, click on **Accept**. A message tells you installation is complete and the unit will be restarted.

13. Click **Ok** to finish and restart the unit. Once restarted, a message asks you to connect to the unit.

14. Click **Ok** to reconnect to the unit.

This completes the configuration of the Tenor using the *Configuration Manager Wizard*.