

Directions for Determining the Software Version of your Tenor For Tenor A200 Only

During the course of business, Quintum Technologies will make new releases (versions) of software available for its current customer base. These new software releases may contain bug fixes and/or feature enhancements and will be posted on our web site for all customers to download.

When a new version of software is created, Release Notes will be created that will describe the new features and any bug fixes that are part of the new version.

Before upgrading your Tenor, you should know the following information;

1. What version you are current running for both the system and the boot code.
2. What the latest version available is.
3. What the fixes and features are in the new version.
4. Compatibility with older software (will be in the release notes).
5. Software requirements (some versions require specific boot code version).

There are 2 types of software in the Tenor. They are the system software and boot software.

The Boot software is the Boot code of the Tenor. This software does not always get updated, only on small occasions. When you look at the release notes for a system software, if the boot software needs to be upgraded, the notes will tell you this.

The System software is the software that the Tenor runs on. This is where most of the features and bug fixes are done.

To determine the System software version on the A200, follow these steps;

1. Using your web browser, connect to the A200 by typing in its IP address in the *Address* field of your web browser.
2. Enter your user name and password (if set) to access the A200.
3. On the left side of the web browser window, click on the **System Information** folder/link. This will display the information on the system as shown below;

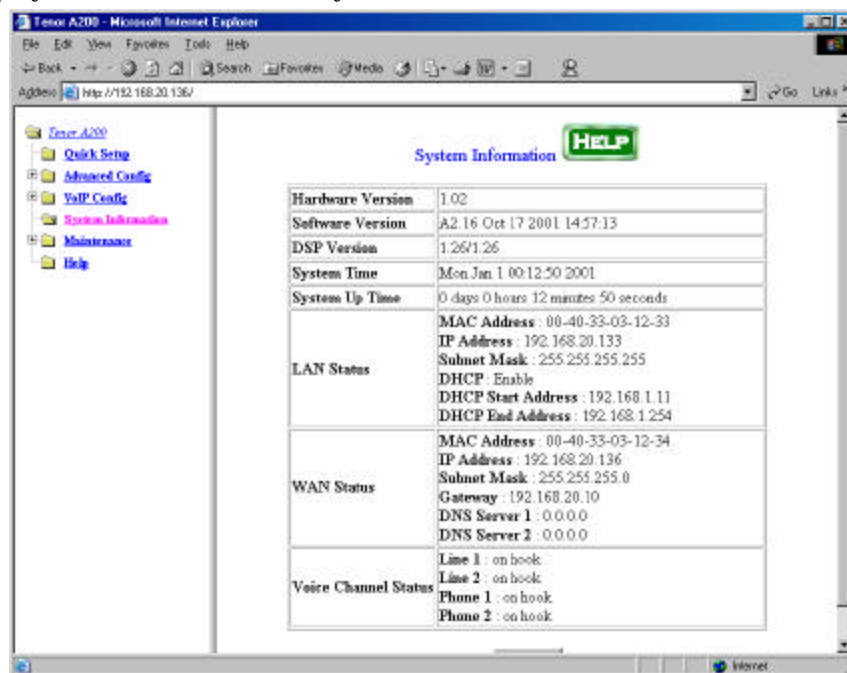


Figure 1

4. The software version (A2.16) is the system version that the A200 is currently running.

To determine the Boot software version you are running, please follow the steps below;

Directions for Determining the Software Version of your Tenor For Tenor A200 Only

1. You can only determine the Boot version by connecting to the A200 directly with a null-modem serial cable.
2. Connect your PC's comm. port to the A200 using a null modem serial cable.
3. Open Windows HyperTerminal and configure it to do a direct connect using the comm. port you have connected the serial cable to, and set for 9600, none, 8, 1 and no flow control.
4. Power the A200 off, by unplugging it and then power it back on. You will see information like the below;

```
Internet Telephony Gateway ( Include FirstAid code)
Hardware Version : 1.02
Boot Code Version : 1.02
LAN Port MAC Address : 00.40.33.03.12.33
WAN Port MAC Address : 00.40.33.03.12.34

RTL8019 NIC command Register write test --- OK
RTL8019 MAC Loopback Test --- OK
NU1034 register Read/Write test --- OK
AudioCode_0 HPI register test --- OK
AudioCode_0 Memory Test --- OK
AudioCode_1 HPI register test --- OK
AudioCode_1 Memory Test --- OK

AudioCodes Kernel code software version
Name: Ac483D2ck-S Ver : 1.26 Date:1/24/2001

AudioCodes Program code software version
Name: Ac483D2ce3-S Ver : 1.26 Date:1/24/2001
Press ENTER to get in PCGT console within 3 seconds.
.....
.....
```

5. The line that reads "Boot Code Version : 1.02" will show you the current boot version that is running.