

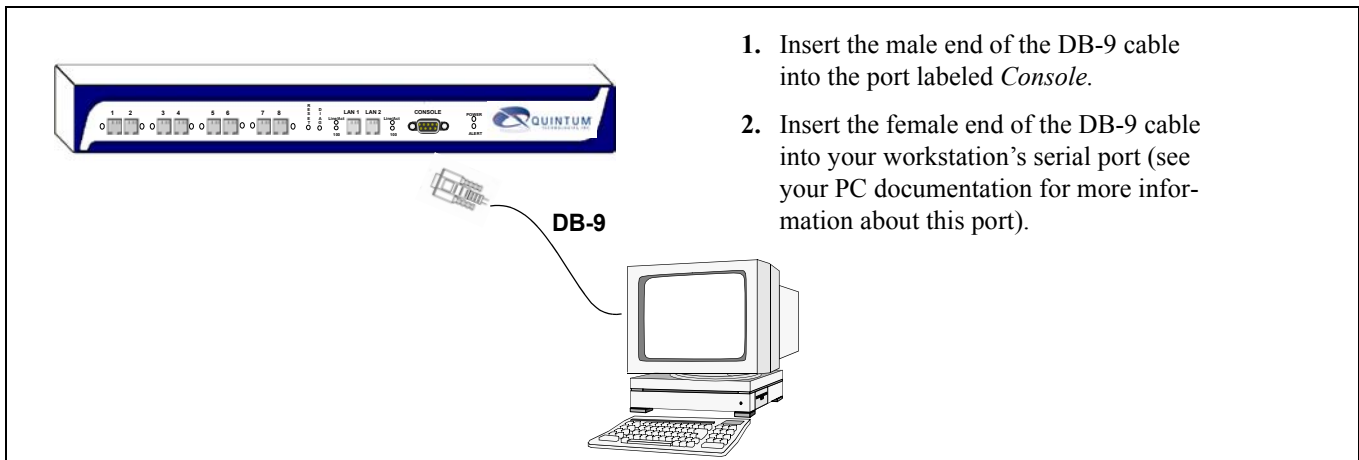
# Tenor™ DX Quick Start

## STEP 1: Connect to Console Port

---

**Connect to PC Console.** You will need to connect the *Tenor DX* to your workstation's serial port through the RS-232 connection. (This connection will be used when you assign an IP address to the unit.) For the instructions below, it is assumed you are connecting to a Windows PC.

**Figure 1: Connect to PC Com Port**

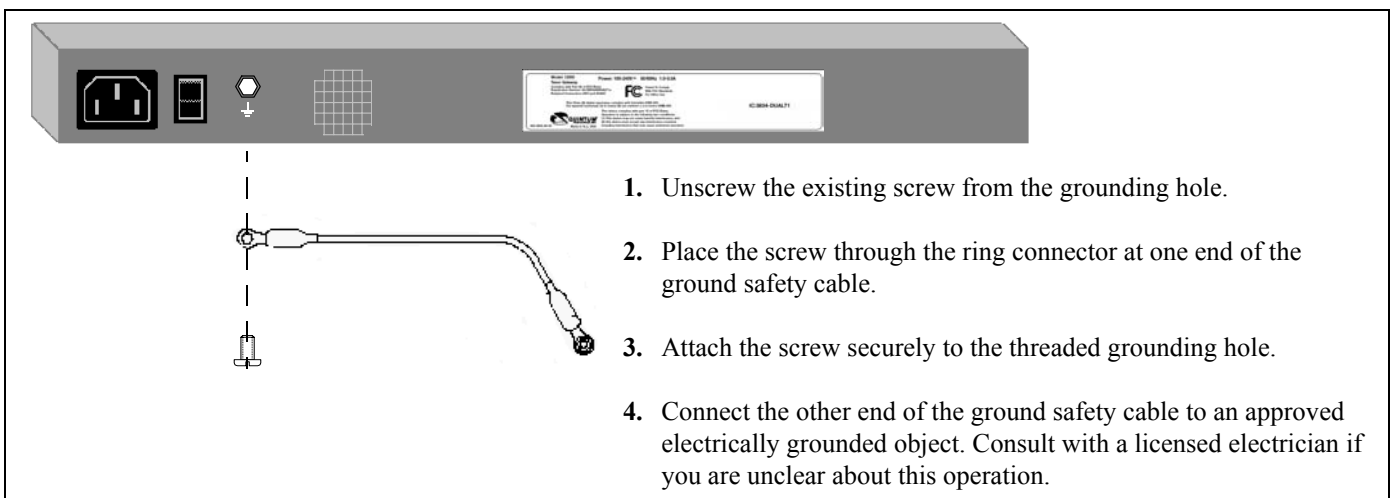


## STEP 2: Install Ground Safety Cable (required for AC power plug with only two prongs)

---

The *Tenor DX* provides an Earth Ground screw (a #6 screw). This screw provides earth ground to the unit if the AC power receptacle you are plugging into does not contain a ground prong (the Quintum supplied power cable has a three prong connector). To provide ground via the grounding screw, you will need to connect the grounding screw to a Ground Safety Cable, which can then be connected to an approved safety earth ground.

**Figure 2: Install Ground Safety Cable**



## STEP 3: Power Up the System

---

---

1. Plug in the power cord to an AC outlet.
2. Locate the on/off switch on the back of the unit and click the switch to **On**.

## STEP 4: Configure Terminal Software/Assign IP address to Tenor DX

---

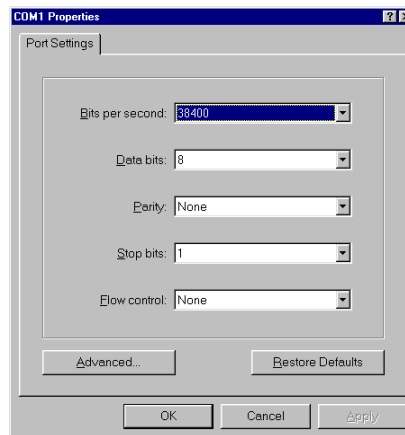
---

Communication between the Tenor DX and the PC is enabled through an RS-232 connection and terminal emulation software. When a Tenor DX is shipped to a customer, it has a private IP address assigned to it which is utilized by Quintum Manufacturing for final testing, prior to shipment. You must re-configure the IP address to use your own network using the procedure which follows.

The instructions below assume you are running HyperTerminal (running on Windows 95 or later) on your PC.

1. From your PC, click on *Start> Programs> Accessories> Communications> HyperTerminal*. The *Connection Description* is displayed.
2. Enter a connection name (i.e., name for each unit such as Tenor DX 1 and click **Ok**.
3. Choose the connection port on your PC from the *Connect Using* drop down list box (i.e., Direct to Com1). Click **Ok**. The *Com1 Properties* window will be displayed. See Figure 3.

**Figure 3: COM1 Properties screen**



4. From the *Bits Per Second* drop down list box, choose 38400.
5. From the *Data Bits* drop down list box, choose 8.
6. From the *Parity* drop down list box, choose None.
7. From the *Stop bits* drop down list box, choose 1.
8. From the *Flow control* drop down list box, choose None. Click **Ok**. A connection to the Tenor unit is established.
9. Click on *Call>Call*. A connection to the unit will be established. The login prompt appears.
10. Enter a login name. The default login name is *admin*.
11. Enter a password. The default password is *admin*. (Once you are up and running, changing the password is a good idea for security purposes). Step through each of the following parameters and enter the correct values for your installation: IP address, Subnet Mask and Default Gateway.
12. At the **Quintum** prompt, type **ei** to reach the Ethernet prompt and then type **config** to change to the configuration mode.
13. To set the IP address, type **set ipa** followed by the IP address.
14. To set the Subnet Mask, type **set subnetmask**, followed by the subnet mask.
15. Type **siprd** to change to the Static IP Route Directory.

16. To set the Default Gateway IP, type **change 1 g** followed by the IP address for the default gateway IP.
17. Type **submit**.
18. Type **maint** to reach the maintenance mode and then **mc**. Type **reset**. A confirmation message will ask if you want to reset the unit. Type **yes** to reset the unit. The reboot enables the Tenor to incorporate the new settings.
19. Once the IP information is set, you are ready to configure the unit. See the *Tenor DX User's Guide* (included on your CD ROM) for details.

## STEP 5: Connect the Unit

---

---

**NOTE:** If a T1/E1 card is installed in a port, and the card is set to offline (via *Command Line Interface*), the LED on each side of the port will flash yellow.

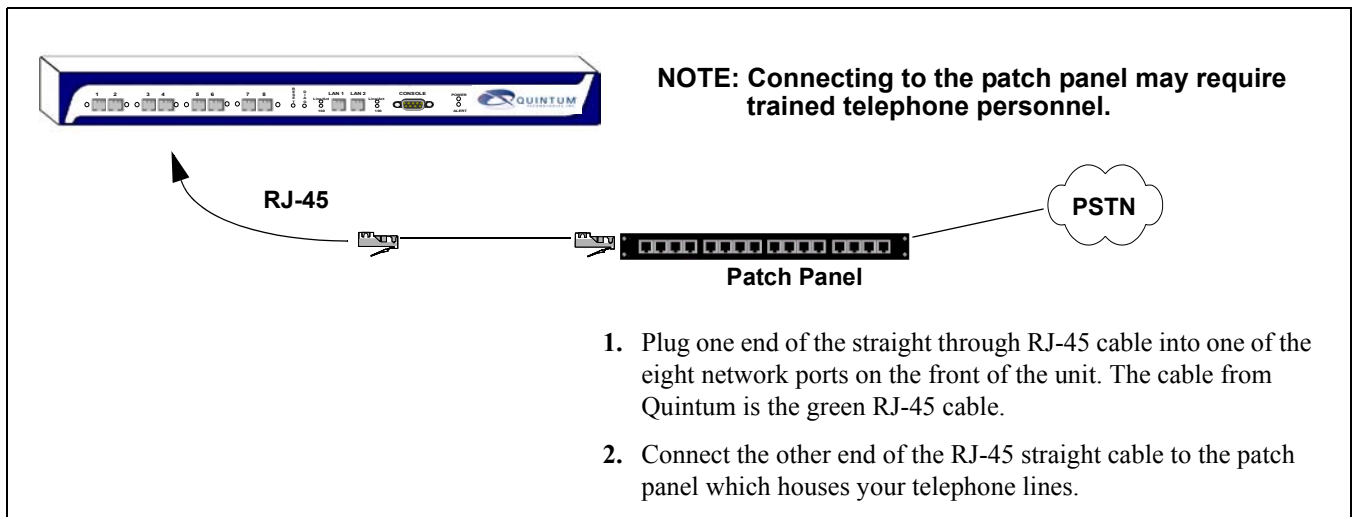
The following steps are required to fully connect the Tenor DX.

- Connect to Trunk Interface (PSTN)
- Connect to Line Interface (PBX)
- Connect to Ethernet Hub/Switch

Adjacent port pairs (i.e., 1/2, 3/4, etc.) are configured by default to connect to each other (power off bypass) when the unit is turned off, or when the unit is in Offline mode. This is the preferred method when connecting one of the lines to a PBX, and its adjacent pair to the PSTN. However, if you have adjacent port pairs that are connected to similar devices (i.e., both going to PSTN) in which you do not want the two ports to be connected to each other in case of power off or offline, you should set the power off bypass = 0. Each pair of ports (1/2, 3/4, 5/6 and 7/8) have their own online/offline and power off bypass control. See the *Configuration Manager* online help or the *Command Line Interface (CLI)* guide for specific configuration information.

### Connect to Trunk Interface (PSTN)

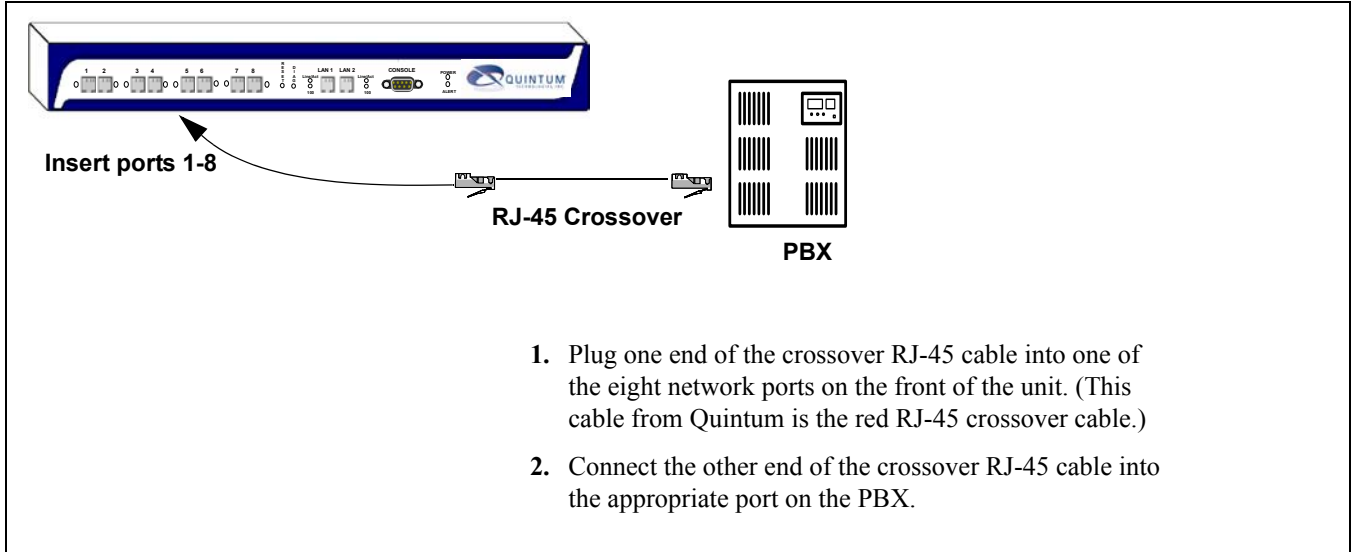
**Figure 4: Connect to Trunk Line (PSTN)**



## Connect to Line Interface (PBX)

Since there are many different PBX devices and connection methods, your individual PBX will determine the connection method you use to connect to the unit. For example, your PBX may be connected using a patch panel, punch down block, wire wrapped blocks, etc. If you are not sure about installation procedures, contact the network administrator or review the documentation you received with the PBX.

**Figure 5: Connect to Line Interface (PBX)**



## Connect to Ethernet Hub/Switch (LAN)

You can use these instructions for general connection purposes only. The Ethernet hub/switch manufacturer's documentation should provide specific instructions for connection to another device, such as the *Tenor DX*. Only LAN 1 is available for use; LAN 2 is reserved for future use.

**Figure 6: Connect to Ethernet Hub/Switch**

